

Walk With Me



Artwork by: Chloe Watego

Meet the Artist



I PAY MY RESPECTS TO THE GUBBI GUBBI/KABI KABI PEOPLE AND THEIR ELDERS, ON WHOSE LANDS I RESIDE WITH MY FAMILY.

I acknowledge the ongoing sovereignty and custodianship of First Nations peoples throughout Australia and their enduring connections to country.

Chloe Watego

CHLOE WATEGO IS AN IMAN & SOUTH SEA ISLANDER WOMAN RESIDING ON GUBBI GUBBI COUNTRY WITH A PASSION FOR SHARING AND CELEBRATING HER CULTURE THROUGH ART.

As a self-taught artist, Chloe uses painting for creative expression and to aid in healing as she continues to explore her family's heritage.

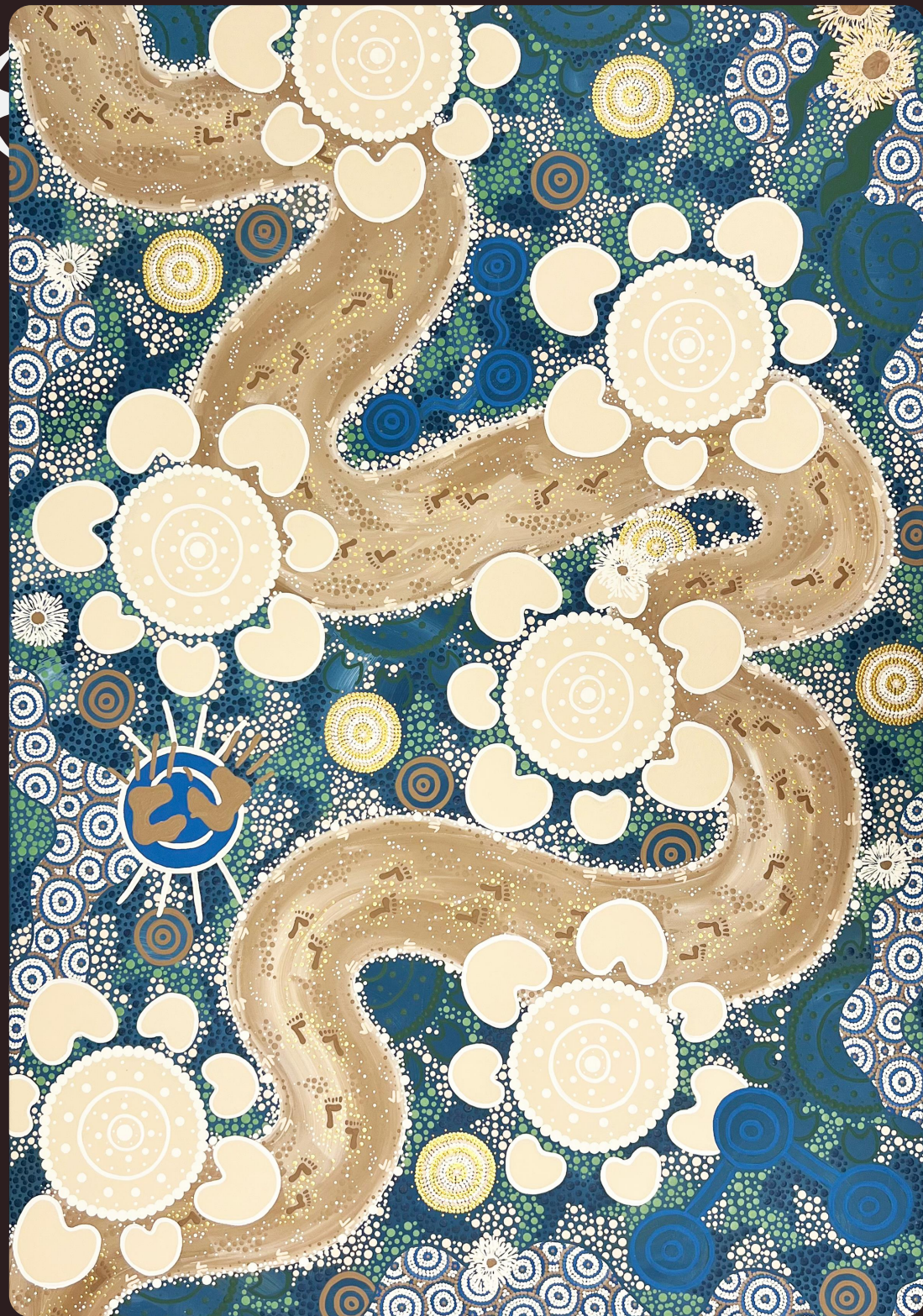
Born and raised on Yugambah land, Chloe is of South Sea Islander descent and through her Grandmother has ties to Torres Strait Island and the Bundjalung Nation.

Her Grandfather was removed from mob due the Stolen Generations, causing a hurtful disconnection to heritage and culture for him and the following generations of his family.

It was while on this journey to identify her Grandfather's country, tribe and language that Chloe first started painting.

Chloe's artworks are a means to shine a light on her family's enduring ties to the land while also illuminating the path forward for her children and future generations of her family.

The Artwork



"WE ENTER THIS LIFE WITH PURPOSE AND DESERVE THE OPPORTUNITY TO LEAVE IT WITH THE SAME SENSE OF MEANING.

AS WE FLOW ALONG THE RIVER OF LIFE, THE IMPORTANCE OF STAYING INFORMED AND MAINTAINING AS MUCH CONTROL AS POSSIBLE IS IMMEASURABLE."

The Story

Walk With Me

2024

While each of us holds unique and deeply personal beliefs about life and death, many Aboriginal and Torres Strait Islander Peoples view existence as a journey set and guided by our ancestors or creator.

Life is seen as purposeful, with each of us placed on this Earth for a reason, and our departure is likewise intentional.

After death, it is believed that our spirits return to our creator in preparation for the next journey.

Death, though inevitable, is an essential part of our time on Earth.

While it is a subject many might shy away from discussing, it is crucial to understand that there are people and services dedicated to helping us live the remainder our lives in the way that aligns with our purpose.

People and services that acknowledge and respect the we are the experts of our own lives.

They walk beside us - not in front, nor behind - side by side until our end of time.



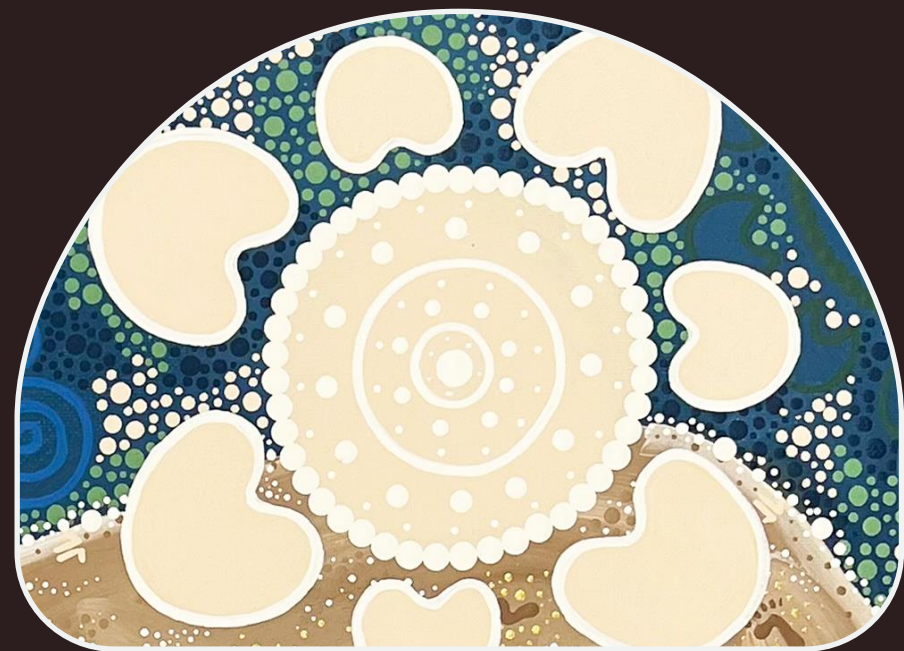
Meeting place



Walking our life path



Ancestral protection and guidance



Working together



Powers of nature



Ongoing connections

Chloé Watego Art

WWW.CHLOEWATEGOART.COM

